

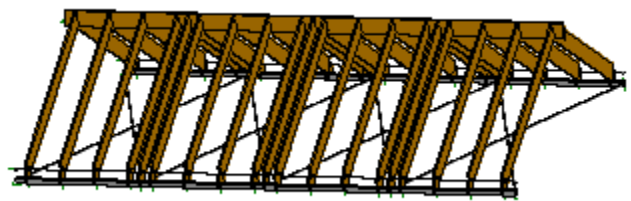
# LEPO / BARR RESIDENCE DUBUQUE COUNTY, IOWA

The Lepo / Barr Residence sits atop an Iowa bluff overlooking the mighty Mississippi, and the rolling hills of southern Wisconsin. Large windows were employed within most exterior walls to allow the grand vistas to enter the interior. The lack of sheathed walls and the height of the building created challenges to resist the lateral forces associated with wind. So, a series of steel frames were installed to enhance the stiffness and strength the structure.

The residence features a large Great Room where diagonal steel cables and concealed steel tubes are used instead of roof trusses to create a unique space.



In-progress Construction



3D Finite Element Model of  
Roof Framing

